

Base Real Estate Layers

- ✦ Parcels
- ✦ Sales
- ✦ Tax ID
- ✦ Lot and Block
- ✦ Zoning

Political

- ✦ Zip Code Boundaries
- ✦ Section, Township & Range
- ✦ State and County Boundaries
- ✦ Land Use

Transportation

- ✦ Streets and Highways
- ✦ Railroads
- ✦ Recreational Trails

Demographic

- ✦ Population
- ✦ Age
- ✦ Income

Water

- ✦ Surface Water Basins
- ✦ Wetlands
- ✦ Springs
- ✦ FEMA Flood Zone Maps

Environmental

- ✦ Critical Habitat
- ✦ Endangered/Threatened Species
- ✦ Karst Features (Sinkholes, etc.)

Imagery

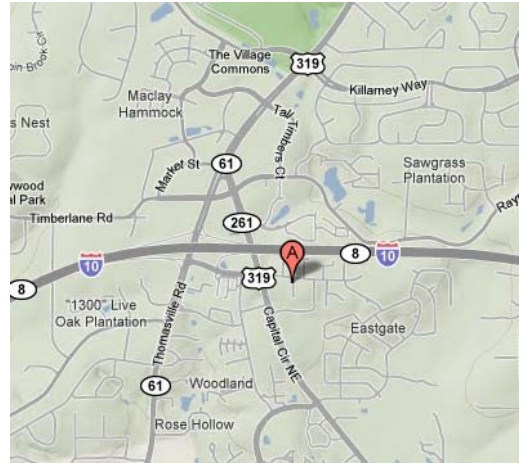
- ✦ Satellite Imagery
- ✦ Topographic maps
- ✦ Aerial Photography

Soil

- ✦ Soil Type
- ✦ Soil Permeability
- ✦ Soil Drainage

Elevation

- ✦ Contour Lines
- ✦ U.S. Geological Survey Maps
- ✦ Digital Elevation Models (DEM)



Advanced GeoSpatial Inc. (AGI)

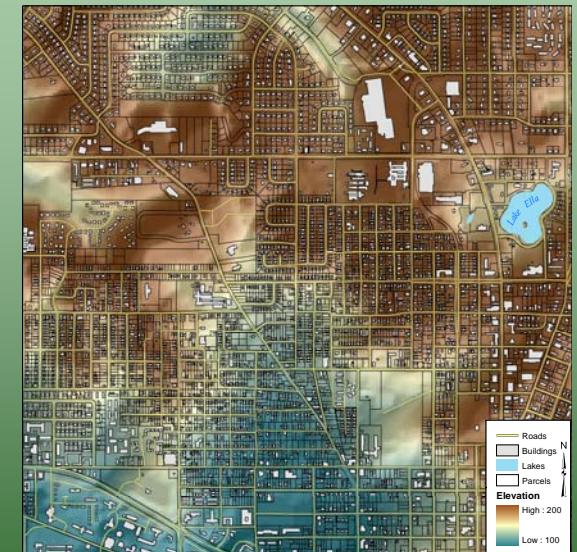
www.adgeo.net

(850) 580-4GIS
1949 Raymond Diehl Rd., Ste. D
Tallahassee, FL 32309

abaker@adgeo.net



Geographic Information Systems in Real Estate

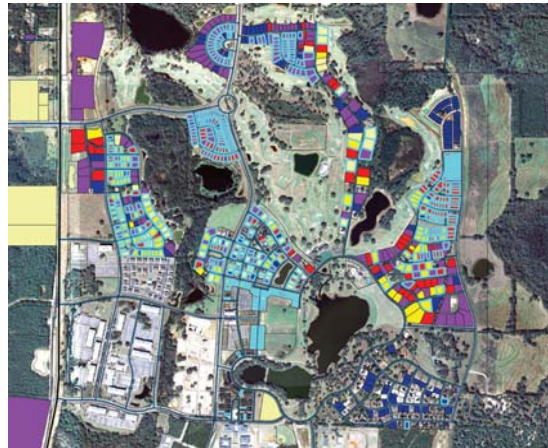


(850) 580-4GIS

Use of **Geographic Information Systems (GIS)** is rapidly growing and developing momentum in the real estate industry. Accessing recent and accurate property data is critical in today's market to keep an edge on competitive firms and to effectively complete property analysis for your clients and your own needs.

Custom Geographic Information Systems Service

Implementing GIS in real property analyses is an excellent way to maximize prospecting time and add value to your efforts. Properties of interest can be characterized and analyzed thoroughly using GIS prior to site visits, making decisions about purchase, or to move ahead at all. With GIS, time otherwise spent researching county property appraiser records, searching databases, and driving around to properties that don't fit necessary criteria can be reduced or eliminated.



AGI provides clients with full service GIS support to complete basic property research, essential due diligence, and extract or reveal trends in sales or property data not otherwise apparent. We have developed solutions using GIS for projects in Florida, Georgia, Tennessee, North Carolina, South Dakota, Wyoming, and Montana.

Custom Maps

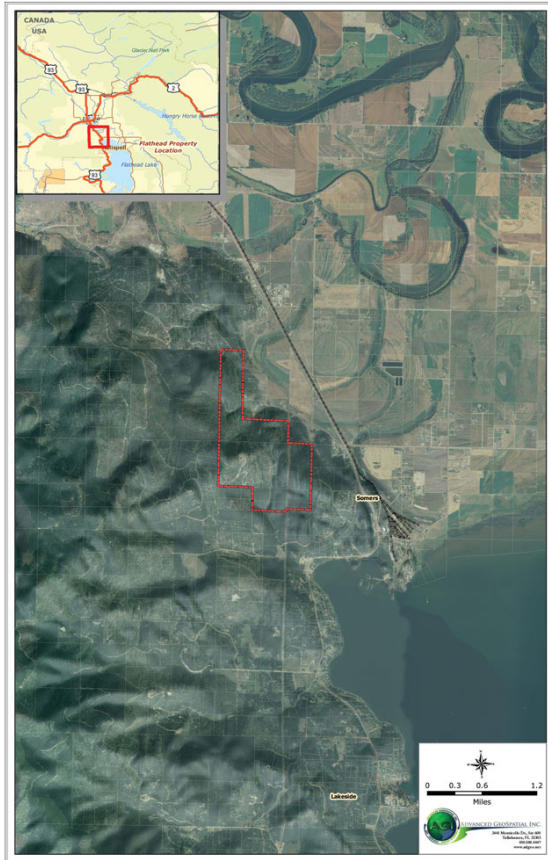
AGI provides on-demand, custom map development services to meet any mapping need. We maintain an extensive spatial database from which we can develop a wide variety of map types. Custom Maps are developed using the latest GIS software and

then delivered electronically in the format of your choice. A custom map might include your site plus layers like parcels, roads, lakes and rivers, elevation, cities or counties. We design and have any size map printed.

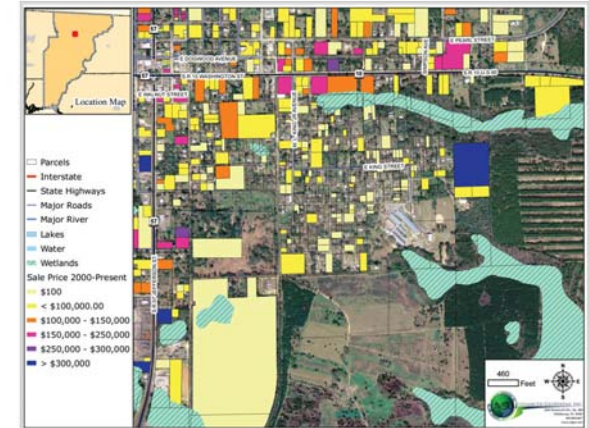
Interactive Map Service

Our interactive map service provides you with a single interface meeting all your property data needs. These packages contain comprehensive locational and real property data which enabling you to:

- Complete property analysis using past sales or zoning
- Measure distances to nearby points of interest or attractions
- Complete preliminary risk assessment with flood zones & wetlands
- Arrange, export, or print maps
- Export maps for use in marketing
- Research areas or neighborhoods
- Maximize prospecting time from office
- Topographic analysis



AGI brings this powerful tool to you to boost your access to and use of important parcel, sales, aerial photographic, zoning and many other types of data which will allow you to more quickly respond to client requests and analyze property data. We accomplish this for our clients in three ways: **Custom GIS Service, Custom Map Service, and Interactive Map Service.**



Interactive maps are currently available for Leon, Gadsden, Wakulla, Jefferson, Bay, Madison, Walton, and Jackson counties in Florida. We can develop an interactive map for ANY county or study area for which we can obtain digital parcel data.