

OUR MISSION AT AGI...

Alan E. Baker, P.G., Vice President of Operations, Principal GIS Consultant

Alan, co-founder of AGI, holds a degree in Geology from Florida State University and is a Licensed State of Florida Professional Geologist. Mr. Baker has nearly nine years of GIS experience and specializes in GIS project design and management. His skills include complex site map creation, predictive spatial analysis and modeling, real estate prospect analysis, database creation and management, municipal infrastructure digitization and mapping, and three-dimensional conceptualization.

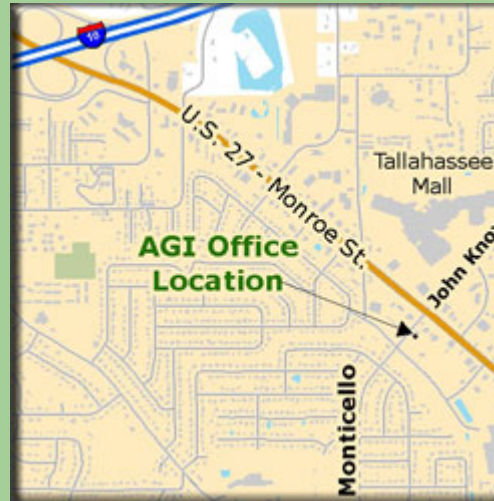


James R. Cichon, Vice President of Management, Senior GIS Consultant

Jim holds degrees in Chemistry and Geology from Florida Atlantic University. Jim is co-founder of AGI and oversees the financial operations and project management. Jim has over eight years of GIS experience and his skills include GIS database design and maintenance, infrastructure mapping, advanced statistical analysis, facility layout and management, predictive spatial and statistical analysis, water use permitting, global positioning systems, and water-resource analysis.



We are intent on promoting stewardship of natural resources and streamlining business processes through the development and application of geographic information systems.



Contact us to find out how we can add value to your projects and deliverables in a cost-effective and time-efficient manner.

On the web: www.adgeo.net

(850) 580-4GIS
1949 Raymond Diehl Rd., Ste. D
Tallahassee, FL 32308

Email: abaker@adgeo.net

ADVANCED GEOSPATIAL INC.



Combining expert knowledge and experience with the latest GIS technology

- LOCATION INTELLIGENCE
- INFRASTRUCTURE MAPPING
- PREFERRED SITE SELECTION
- ENGINEERING MAP SUPPORT
- PREDICTIVE SPATIAL ANALYSIS
- REAL ESTATE GIS SERVICE
- CUSTOM & INTERACTIVE MAPPING

850-580-4GIS

Who we are...

AGI specializes in streamlining business processes and developing solutions to environmental, land use, real estate and engineering topics using geographic information systems (GIS).

Our clients include state and local government, real estate professionals, environmental and engineering consulting companies, utilities, and water resource professionals. AGI combines both GIS expertise with in-depth knowledge of land use & environmental issues to provide value-added services to clients.

AGI stands out among its competitors in that all our professionals share a comprehensive understanding of our clients' business & operations and are experienced GIS analysts. This combination allows AGI the opportunity to offer our services in the most efficient, streamlined method.

What we do....

From simple site map characterization to sophisticated geostatistical and spatial modeling, AGI has the expertise and experience to incorporate location intelligence and add value to your projects and work. These are examples of some of the specialized services we provide clients to meet their goals.

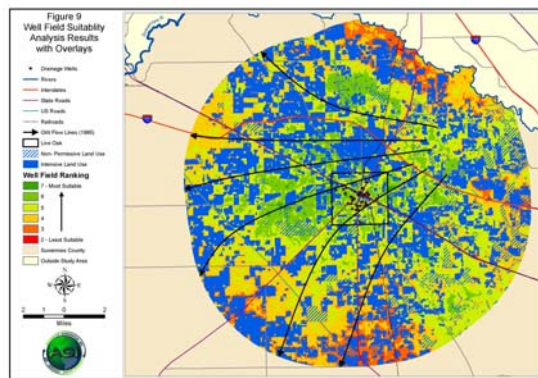
INFRASTRUCTURE MAPPING

AGI assists utilities and municipalities in the development of digital models of infrastructure features, including conversion of CADD or paper map files and GPS. We have developed models for natural gas pipelines, sanitary sewage, water distribution, and stormwater collection.



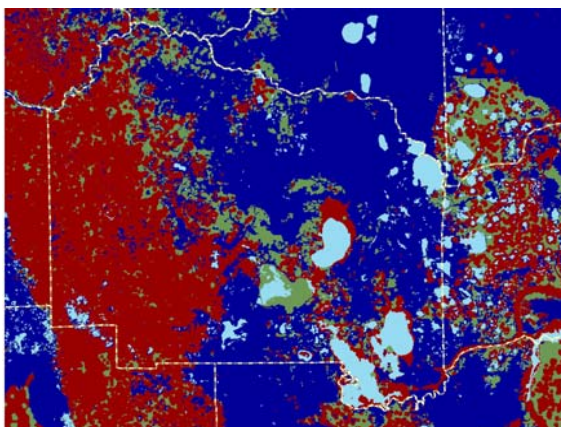
PREFERRED SITE SELECTION

AGI develops site suitability analyses to identify land areas that are most desirable to meet client needs. Results greatly reduce time typically spent searching records manually, data processing or field surveying by providing a highly usable, detailed display of the most suitable sites.



PREDICTIVE SPATIAL ANALYSIS

AGI is the sole source provider of aquifer vulnerability assessments using predictive spatial analysis. We assist community planners, environmental regulators, resource managers, and local governments in meeting their objectives of protecting ground-water resources.

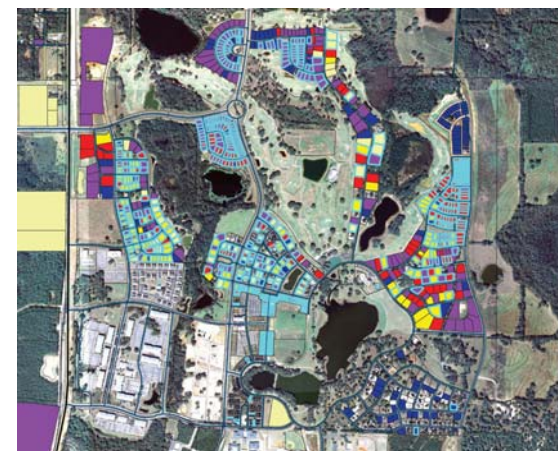


ENGINEERING MAP SUPPORT

Wetlands, water bodies, topography, soils sinkholes, parcels, infrastructure, GPS, and sample site location are all integral parts of many types of civil & environmental engineering projects. We use GIS to characterize these data types in support of diverse engineering projects.

REAL ESTATE GIS SERVICE

Accessing recent property and parcel data is a crucial factor in property analysis and prospecting. We provide customized datasets, specialized queries, and interactive maps for use by real estate agents, property appraisers, investors, developers and prospectors. We can quickly extract trends in sales, view statistics in map detail, and generate useful reports.



CUSTOM & INTERACTIVE MAPPING

AGI provides on-demand, custom map services to meet all your mapping needs. We maintain an extensive spatial database from which we can develop a wide variety of map types. AGI provides the most up-to-date data to develop maps to meet data demands. For specialized projects we also can locate, customize, or develop virtually any type of data you need to characterize your area of interest.

