

Site	Name Site Level Classes	Acres
1400	Mixed Hardwood-Coniferous	245.7
1410	Successional Hardwood Forest	8.6
1831	Rural Open	24.3
1840	Transportation	0.1
2111	Wet Prairie	3.9
2120	Marshes	47.8
2140	Floating/Emergent Aquatic Vegetation	3.1
2211	Cypress	213.6
2233	Mixed Wetland Hardwoods	160.9
18212	Residential, Low Density	0.3
18311	Rural Open Forested	36.8
18331	Cropland/Pasture	61.3

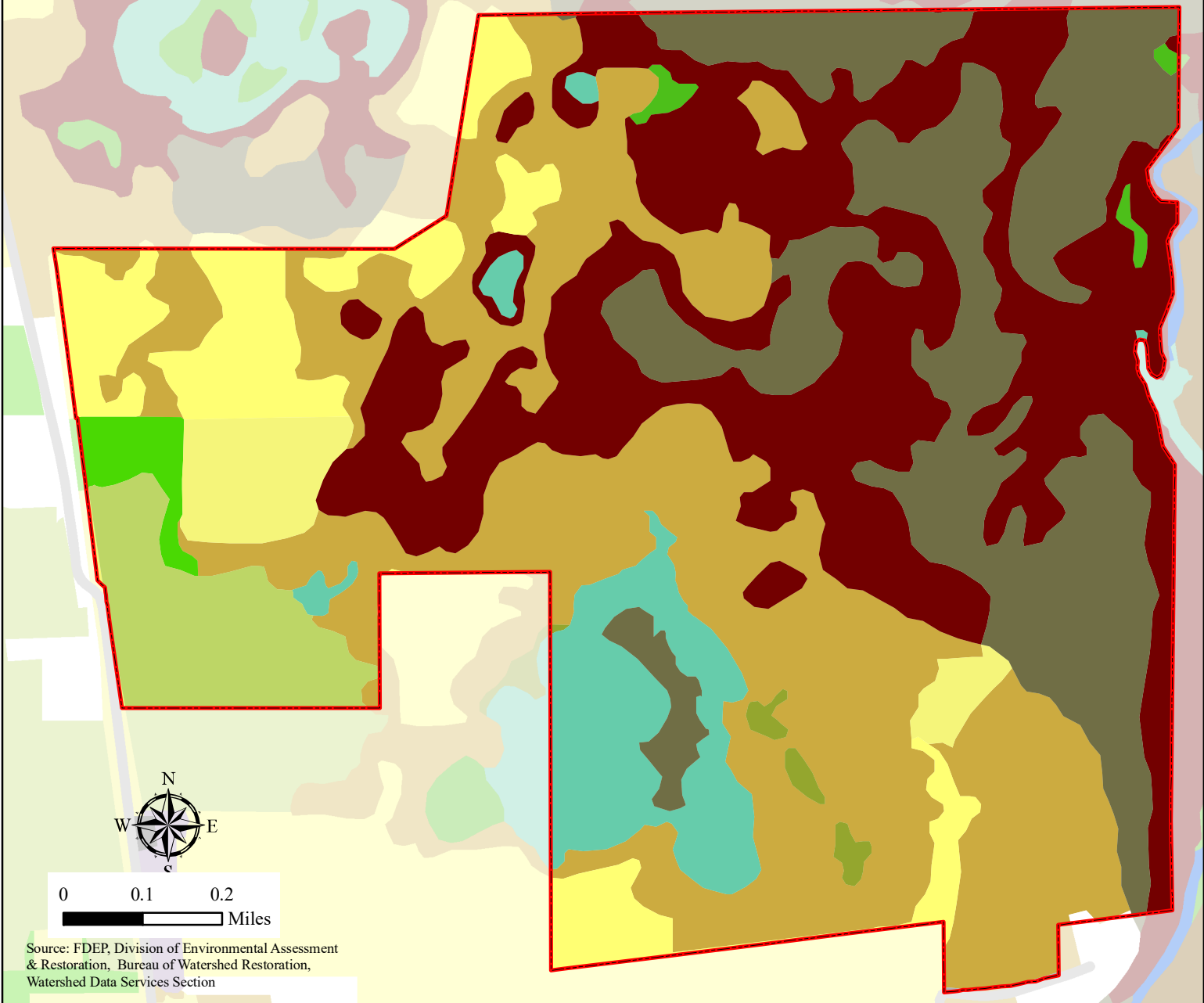


Figure 4
Land Cover Map

Triple S Ranch, Citrus County, FL - Cooperative Land Cover (SWFWMD)

- Triple S Ranch
- FLUCCS (Site Level Classes)**
- 1400 - Mixed Hardwood-Coniferous
- 1410 - Successional Hardwood Forest
- 1831 - Rural Open
- 18311 - Rural Open Forested
- 1840 - Transportation
- 2111 - Wet Prairie
- 2120 - Marshes
- 2140 - Floating/Emergent Aquatic Vegetation
- 2211 - Cypress
- 2233 - Mixed Wetland Hardwoods



547 N. Monroe St., Suite 201
Tallahassee, Florida 32301
Telephone: 850-222-3975
Fax: 850-681-0560

Jim Stidham & Associates, Inc.
Hydrology, Geology, Civil &
Environmental Engineering
L.B. No. 00005629